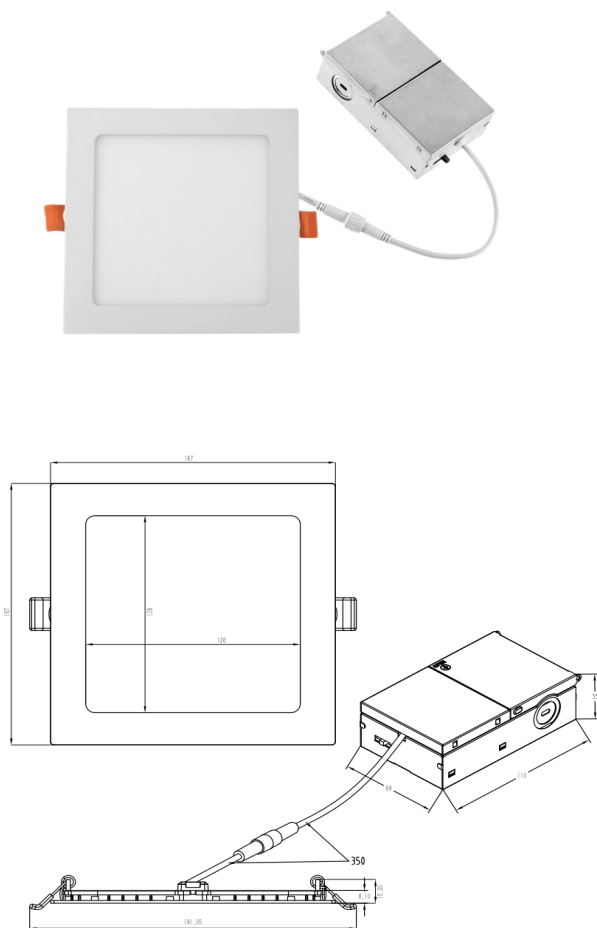




2700K
3000K
3500K
4000K
5000K

6" LED CCT Slim Down Light with JBOX 2421

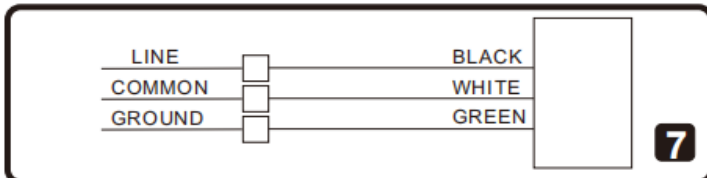
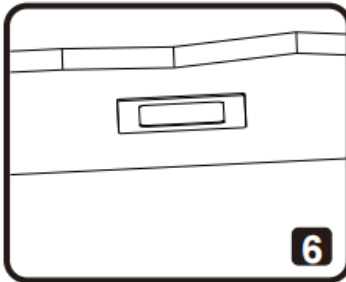
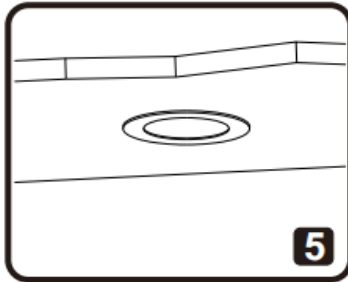
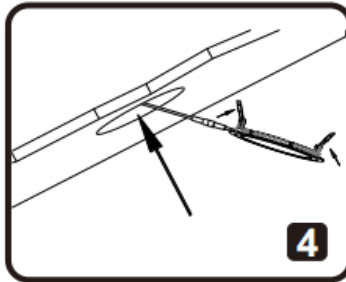
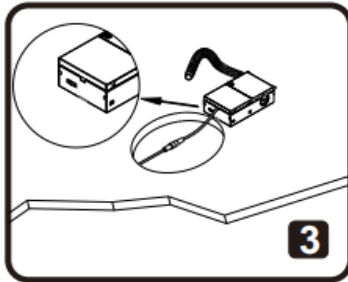
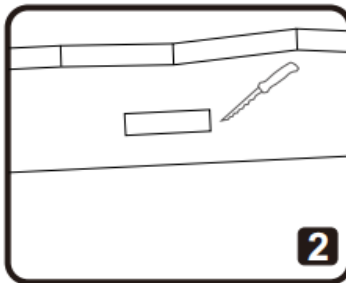
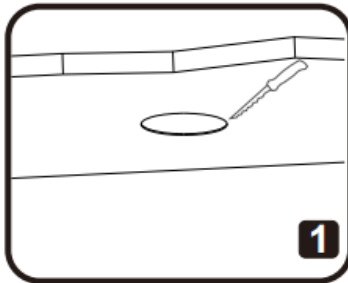


Specification & Features

- Model No.:2421
- Voltage : 120V AC
- Watt:15W
- 5CCT Adjustable: 2700K/3000K/4000K/5000K/6500K
- CRI:>90
- Lumen Output: 1100lms
- Size : $\Phi 167 \times 167 \times 15.2 \text{mm}$ (6.57"x6.57"x0.60")
- Suitable for Surface Mount
- UL approved
- Wet location rated
- 50,000 h life span
- 5 years' warranty



NEW CONSTRUCTION INSTALLATION



STEP 1:

Make sure the POWER IS TURNED OFF at the source to the recessed housing in which you are installing the product.

STEP 2(Fig 1/Fig 2):

If a new hole is needed, use a hole cutter to take hole according to the size in the table. A template is provided to assist with laying out the hole location.

STEP 3(Fig 7):

Connect wire to the power source (black to hot, white to neutral, green to ground). Close the J-box securely.

STEP 4 (Fig 3):

Adjust the color temperature to desired one, by sliding the other selector switch. Make sure the switch is never in between positions.

STEP 5(Fig 4):

Squeeze the spring clips so they are in an upright position and insert lamp into housing.

STEP 6(Fig 5/Fig 6):

Once fixture is inside the housing, release the spring clips and continue pushing fixture until securely fixed and flush with ceiling.

STEP 7:

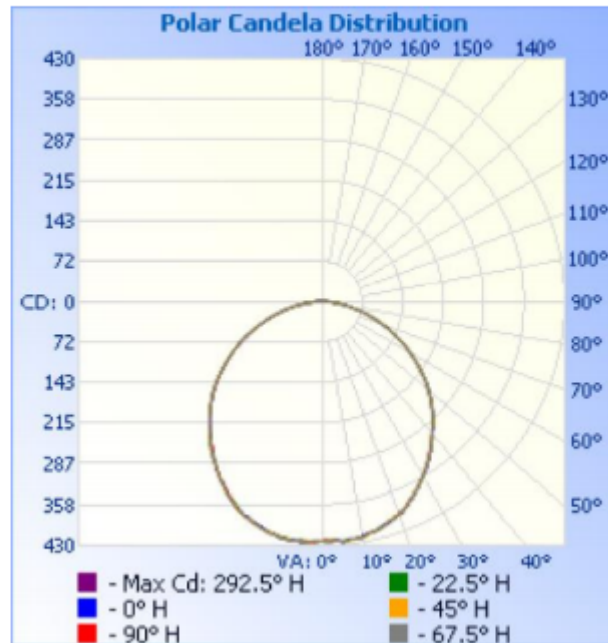
Restore power at the source and the installation is complete.

STEP 8:

Once the fixture is mounted on the wall, caulk the space between the wall and the Shell.

Goniophotometer Test (Cont'd)

Light Distribution Curve



Isolux Plot

