



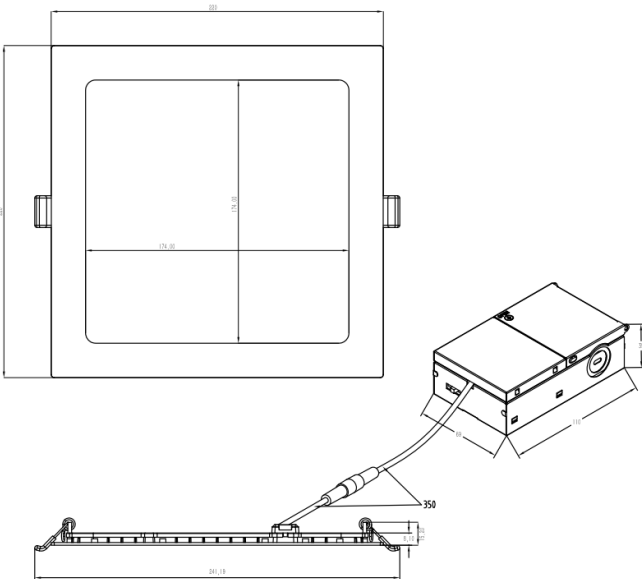
- 2700K
- 3000K
- 3500K
- 4000K
- 5000K



8" LED CCT Slim Down Light with JBOX  
2422

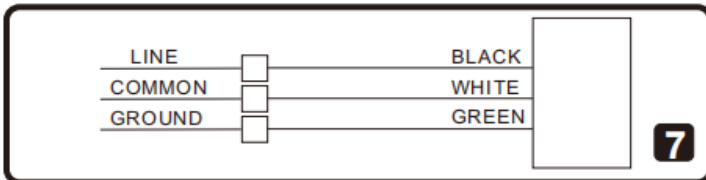
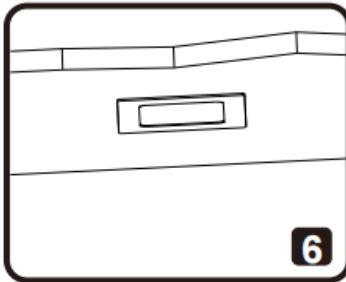
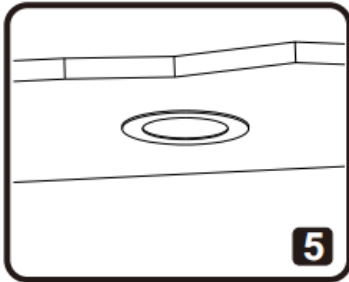
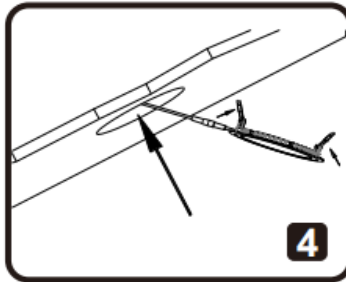
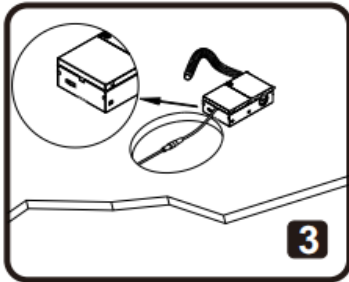
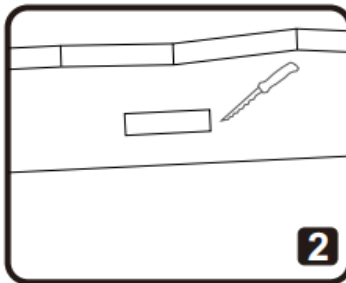
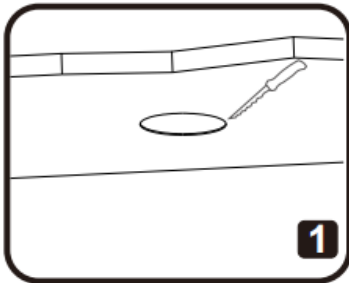
## Specification & Features

- Model No.:2422
- Voltage : 120V AC
- Watt:20W
- 5CCT Adjustable: 2700K/3000K/4000K/5000K/6500K
- CRI:>90
- Lumen Output: 1600lms
- Size :  $\Phi 220 \times 220 \times 15.2 \text{mm}$  (8.66"x8.66"x0.60")
- Suitable for Surface Mount
- UL approved
- Wet location rated
- 50,000 h life span
- 5 years' warranty





## NEW CONSTRUCTION INSTALLATION



### STEP 1:

Make sure the **POWER IS TURNED OFF** at the source to the recessed housing in which you are installing the product.

### STEP 2(Fig 1/Fig 2):

If a new hole is needed, use a hole cutter to take hole according to the size in the table. A template is provided to assist with laying out the hole location.

### STEP 3(Fig 7):

Connect wire to the power source (black to hot, white to neutral, green to ground). Close the J-box securely.

### STEP 4 (Fig 3):

Adjust the color temperature to desired one, by sliding the other selector switch. Make sure the switch is never in between positions.

### STEP 5(Fig 4):

Squeeze the spring clips so they are in an upright position and insert lamp into housing.

### STEP 6(Fig 5/Fig 6):

Once fixture is inside the housing, release the spring clips and continue pushing fixture until securely fixed and flush with ceiling.

### STEP 7:

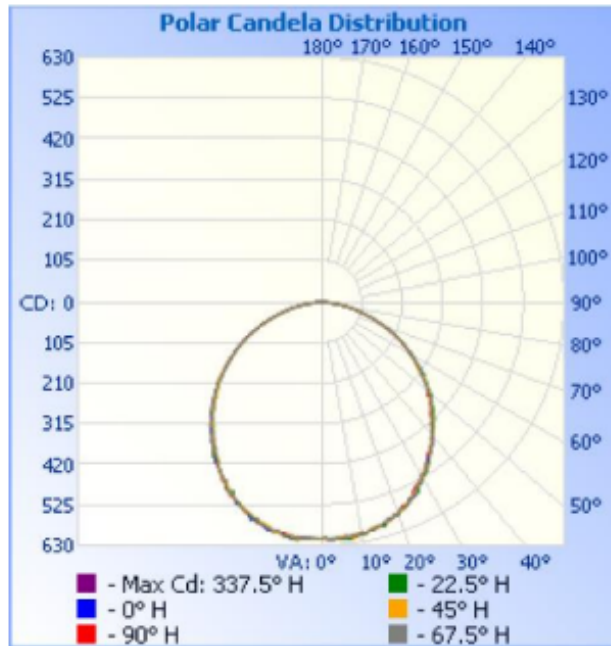
Restore power at the source and the installation is complete.

### STEP 8:

Once the fixture is mounted on the wall, caulk the space between the wall and the Shell.

**Goniophotometer Test (Cont'd)**

Light Distribution Curve



Isolux Plot

