

Straight Square Steel Poles

Straight Square Steel poles are built from high strength steel tube and are available side drilled for arm mounted area lighting luminaires or with tenon mounts for flood and post top luminaires. Typical area lighting applications include retail centers, industrial parks, schools and universities, public transit and airports, office buildings and medical facilities. Mounting heights of 10 to 30 feet can be used based on selected luminaire application.

(ACCESSORIES NEED TO PURCHASED SEPARATELY)

FEATURES

FINISH:

Textured architectural bronze powder-coat finish, baked to ensure maximum paint adhesion, hardness and durability.

ANCHOR BOLTS:

Anchor bolts are not included, sized based on pole data charts for the selected pole size.

HAND HOLE:

Cast iron reinforced hand hole and cover with ground screw.

BASE COVER:

Poles are provided with a two-piece formed steel base cover that is easily assembled and fitted over pole base.

POLE LENGTH:

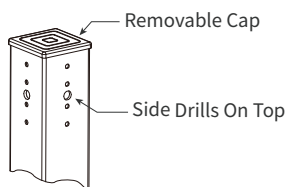
Poles are available in standard lengths as shown in the order matrix. Poles can be custom cut to order. Consult factory.

SURFACE TREATMENT: Hot-dip galvanizing.

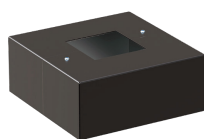
SPECIFICATIONS:

Conforms to ASTM-A 500 Grade B: Minimum Yield Strength of 46,000 PSI.

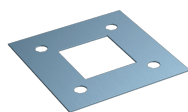
OPTION



PRE-DRILL MOUNT OPTIONS



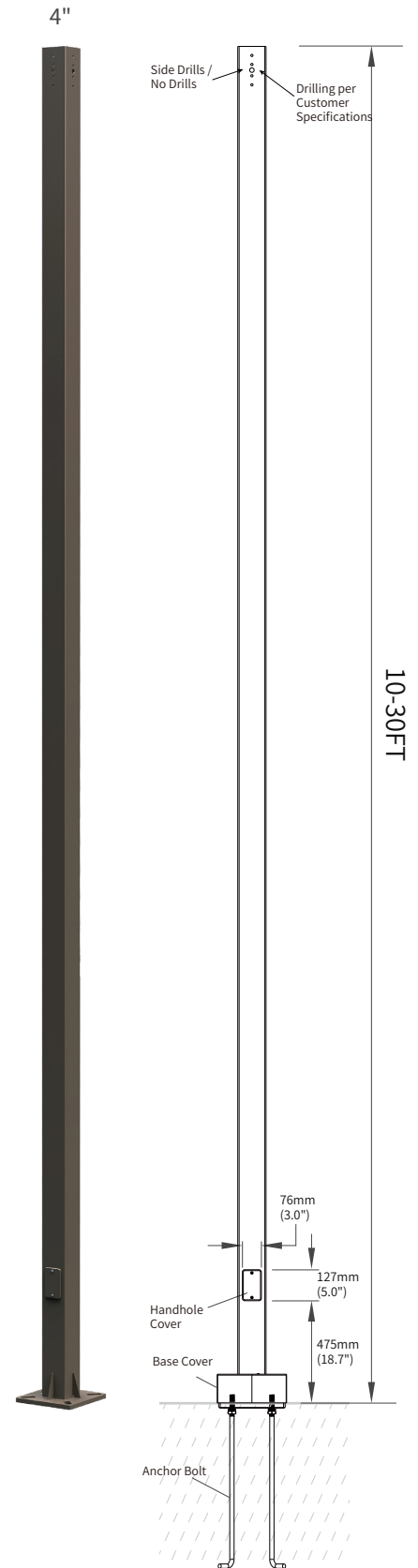
• Base Cover



• Anchor Bolt
Position Plate



• Anchor Bolt



SIDE DRILLS

5 Options (Normal), Customerized Holes acceptable.

I
(Without hole)



II
(3x2 hole)



III
(3x4 hole)



IV
(5x2 hole)

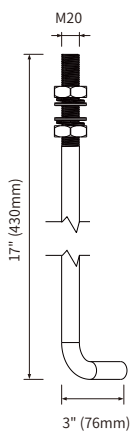


V
(5x4 hole)

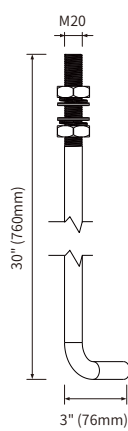


ANCHOR BOLT

4"

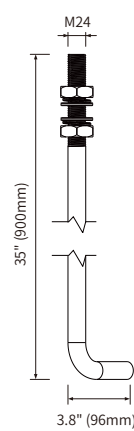


A1
Suit for
10FT, 15FT



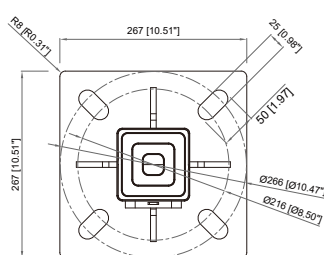
A2
Suit for
20FT,25FT

5"

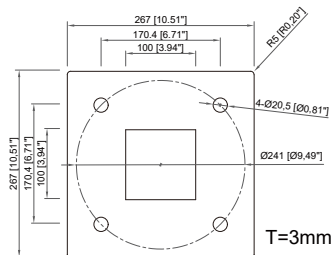


A3
Suit for
30FT

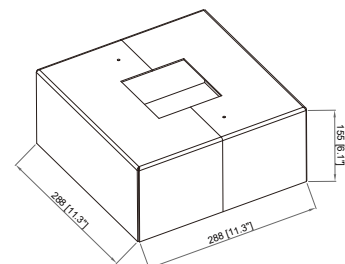
Size:4"(4"x4")



ANCHORAGE GUIDE



Anchor Bolt Positioning Plate



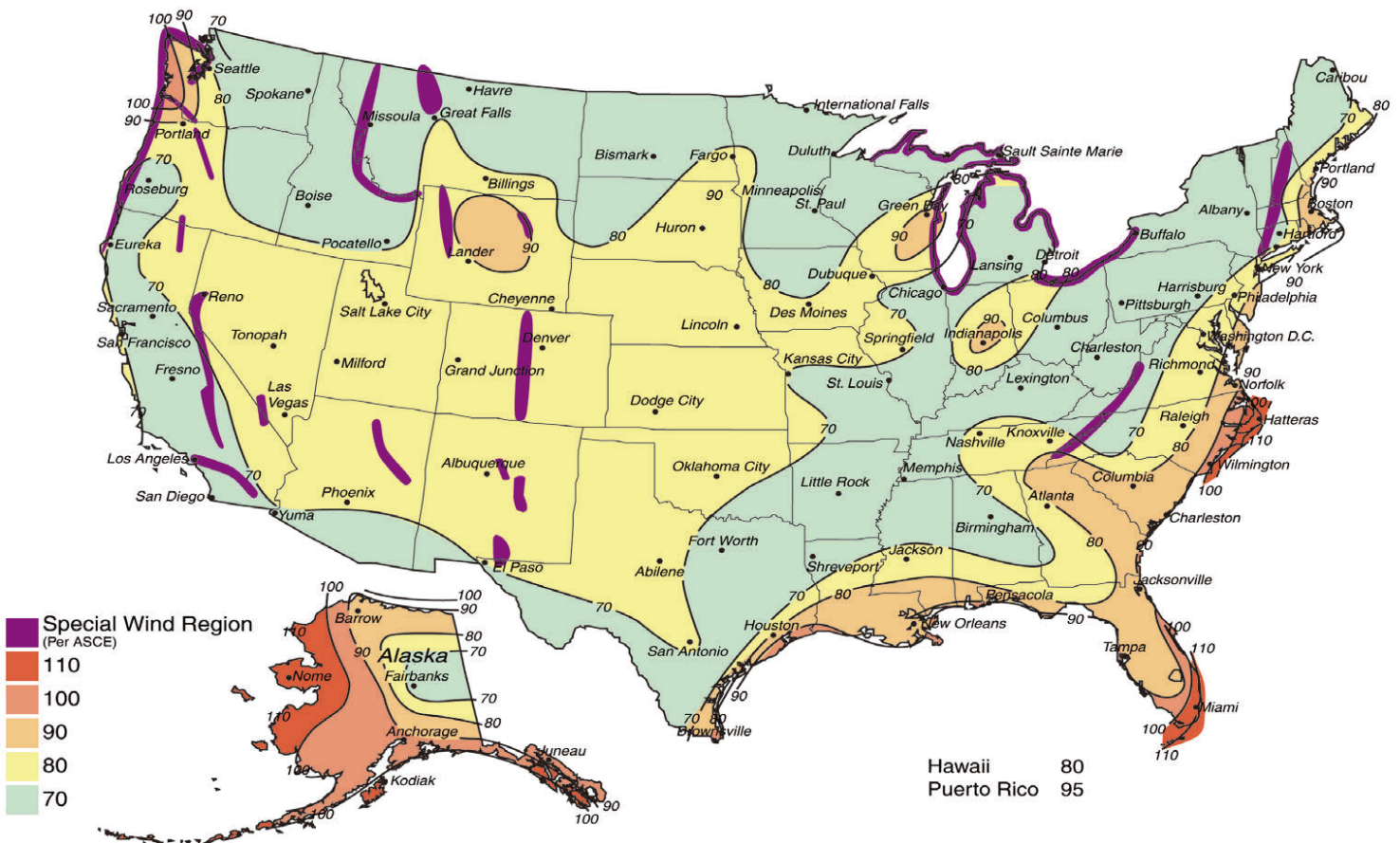
Flange Base Cover

Order Information Example:

SP-20FT-4-11G-BL-I-A2-Blank

Pole	Height	Shaft Size	Thickness	Finish	Pole Top Mount	Anchor Bolt	Options
<div>SP = Straight Steel Square Poles</div> <div>RP = Straight Steel Round Poles</div>	<div>10FT = 3.0M</div> <div>15FT = 4.6M</div> <div>20FT = 6.1M</div> <div>25FT = 7.6M</div> <div>30FT = 9.1M</div>	<div>4 = 4"</div> <div>5 = 5"</div>	<div>7G = 0.179"</div> <div>11G = 0.12"</div>	<div>DB = Dark Bronze</div> <div>BL = Black</div> <div>WH = White</div> <div>SG = Silver Gray</div>	<div>I = Without hole</div> <div>II = 3x2 hole</div> <div>III = 3x4 hole</div> <div>IV = 5x2 hole</div> <div>V = 5x4 hole</div>	<div>Blank = None</div> <div>A1 = 3/4" x 17"</div> <div>A2 = 3/4" x 30"</div> <div>A3 = 1" x 36"</div>	<div>Blank = No Options</div> <div>CU = Customization</div>

Catalog Number	Shaft Size (in)	Shaft Height (ft)	Wall thick (in)	Gauge	Weight (LBS)	Maximum EPA with 1.3 Gust Factor															
						80 mph	Max weight	90 mph	Max weight	100 mph	Max weight	110 mph	Max weight	120 mph	Max weight	130 mph	Max weight	140 mph	Max weight	150 mph	Max weight
SP-10FT-4-11G	4"	10	0.120	11	76	30.6	765	23.8	595	18.9	470	14	325	10.5	263	8.5	213	7	175	6	150
SP-15FT-4-11G	4"	15	0.120	11	113	17.9	450	13.5	335	10.3	250	7.2	185	6	145	4.4	112	3.3	85	2.4	60
SP-20FT-4-11G	4"	20	0.120	11	138	9.6	240	6.7	165	4.5	150	2.5	100	2.5	62	1.5	38	-	-	-	-
SP-25FT-4-11G	4"	25	0.120	11	170	4.8	150	2.6	100	1	50	-	-	-	-	-	-	-	-	-	-
SP-30FT-5-7G	5"	30	0.179	7	380	10.7	267	6.7	167	3.9	100	1	25	-	-	-	-	-	-	-	-



SIDE MOUNT:

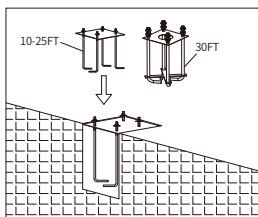
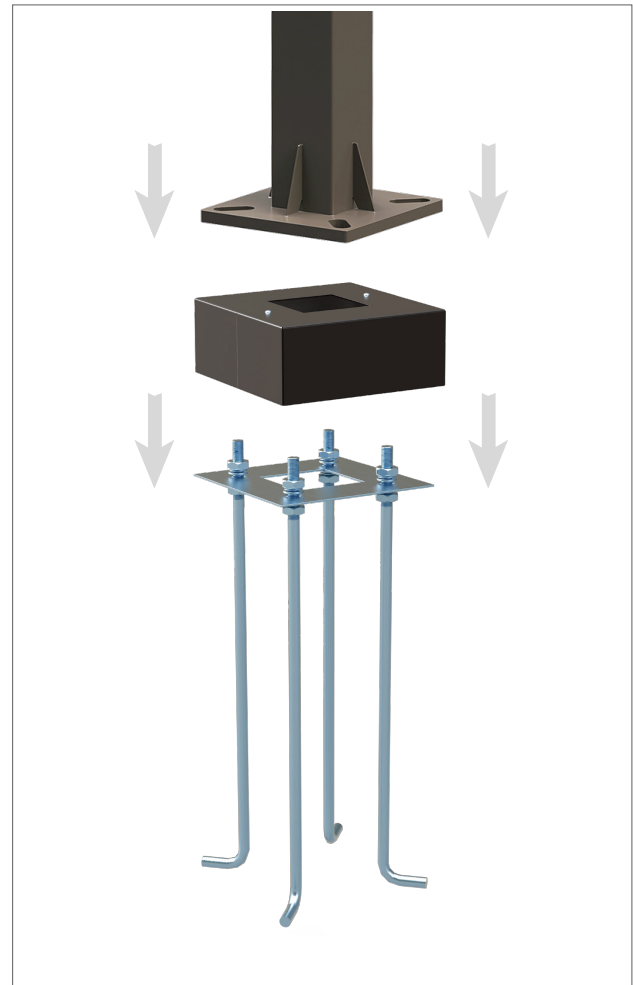
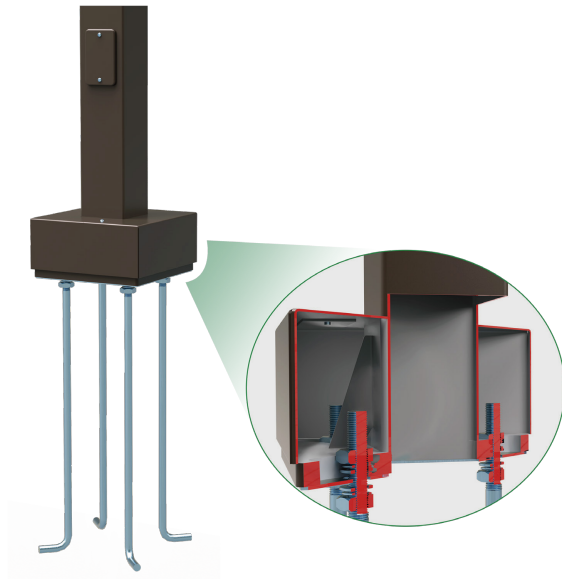
Standard length poles are predrilled holes on 4 side, with a Tenon standard packaged on top. Also with hole plugs for unused predrilled locations.

Note:

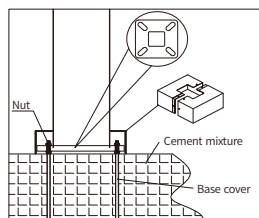
When using Arm or Slip-Fitter Mounts, additional installation parts may be required to ensure proper installation. (example: with Slip-fitter a bullhorn will be the option) see: additional installation parts for more options

TOP MOUNT:

Installing ARM (optional) will need to take-off the Tenon standard package and put rain cover on top.

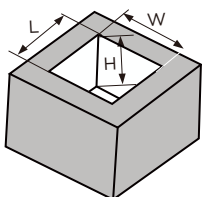


1. Dig a hole in the installation position of the lamp pole. Fixed four fastener fittings according to the hole position of lamp pole and poured with cement concrete. (as shown in the figure)



2. Install 4 screws onto the stick and adjust to same water level, then place the square plate and screw tightly. Install the cover at the bottom of pole. (as shown in the figure)

Foundation reference specification



Reference design of Concrete size				
Specifications	L	W	H	
10-15FT	31.5"(800mm)	31.5"(800mm)	59.1"(1500mm)	
20-25FT	35.4"(900mm)	35.4"(900mm)	70.9"(1800mm)	
30FT	35.4"(900mm)	35.4"(900mm)	82.7"(2100mm)	

Foundation Design: We offer Foundation design references due to variations in soil structure across different areas, and we do not assume any responsibility for this variability.

ANCHORAGE GUIDE

